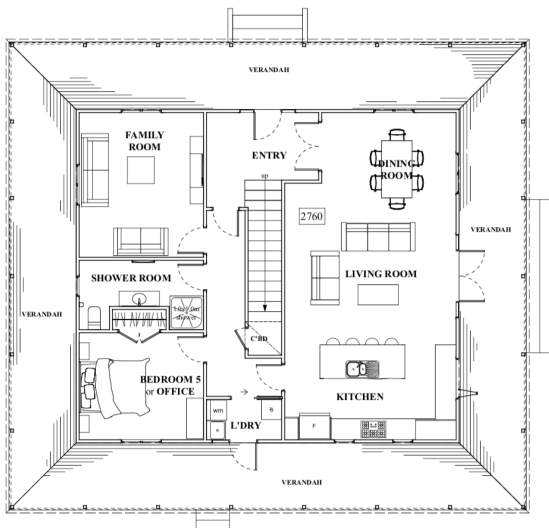


# The Kerikeri Design Plan



AREAS:	
Ground Floor	112.86m <sup>2</sup>
First Floor	112.86m <sup>2</sup>
<b>Total</b>	<b>225.72m<sup>2</sup></b>
Verandah Decks	101.20m <sup>2</sup>

**225m<sup>2</sup> double story home, 5 Bedroom, 3 Bath, Open Dining, Kitchen and Lounge, Separate laundry, wraparound verandah on the ground level**

This traditional missionary styled home is fit for purpose featuring a wraparound verandah. Five double bedrooms, a generous master suite with walk in robe and 3 bathrooms, this home has it all. Including a grand staircase upon entry into the home, and a substantial living area. You will have plenty of room to fit a large family in. The archway windows bring an elegant wow factor to the home embracing the rich heritage look.



# The Kerikeri Design Plan



All our designs are completely customisable so if you'd like to widen or lengthen this design, flip it sideways, or change the layout - anything is possible to suit the needs of your family or property.

We are always available to chat through the options with you.

0508 40 30 20 | [info@heritagehomesnz](mailto:info@heritagehomesnz) | [www.heritagehomes.nz](http://www.heritagehomes.nz) | [f](https://www.facebook.com/heritagehomesnz) @heritagehomesnz [i](https://www.instagram.com/heritagehomesnz)

